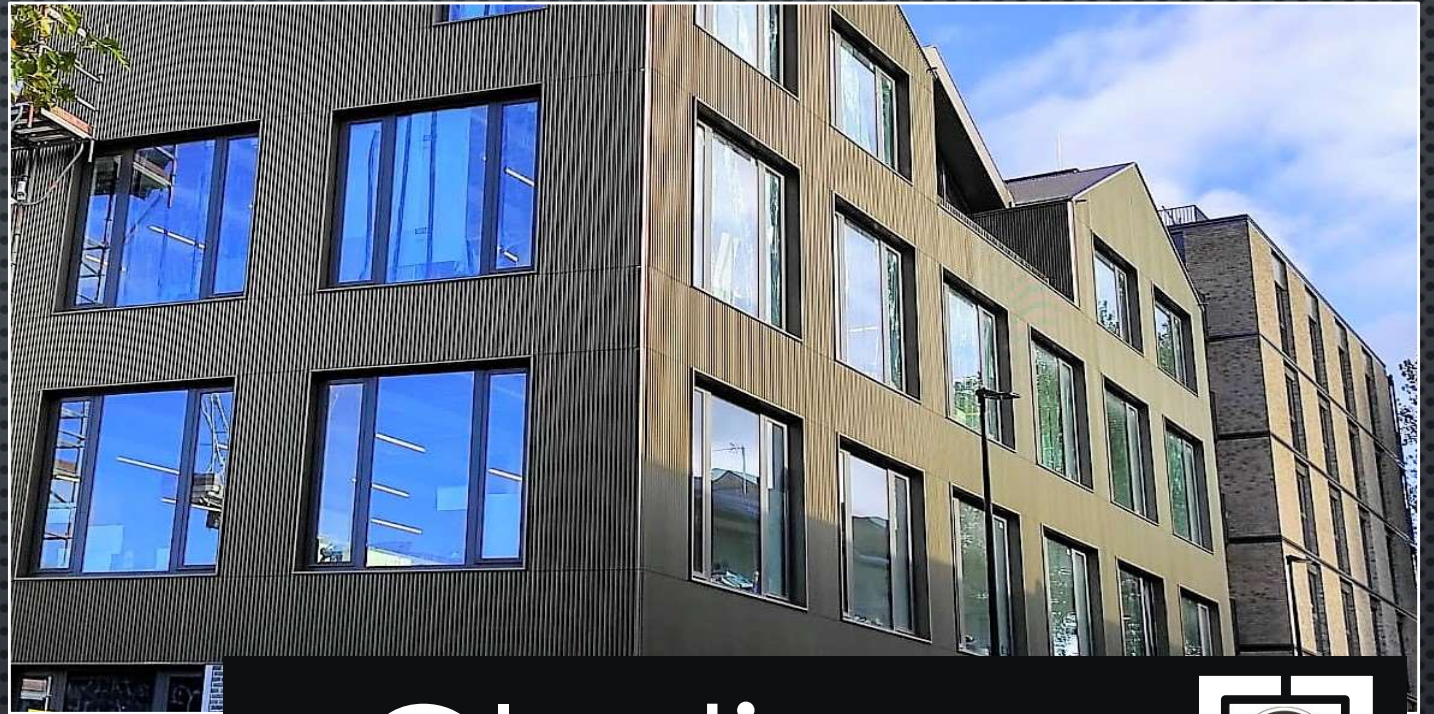


COMPANY PROFILE

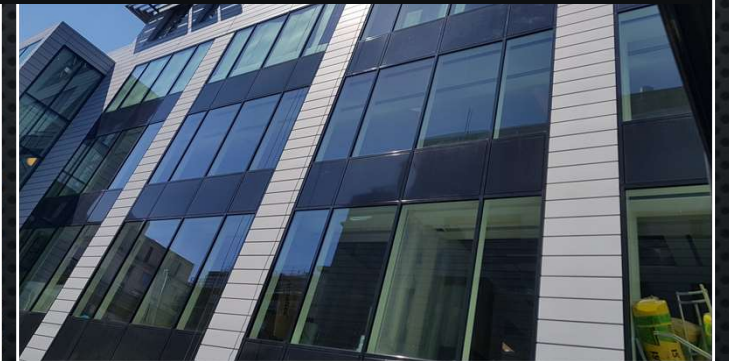
January 2021



Gladious



ARCHITECTURAL FACADES
ARCHITECTURAL METALWORK
ARCHITECTURAL COATINGS



OUR WAY TILL NOW...

- GLADIOUS LTD WAS FOUNDED IN 2016 ON THE BASE OF EXISTING INSTALLATION COMPANY ALUFIX WITH PASSION TO DEVELOP BUSINESS FROM SMALL INSTALLERS TO MEDIUM SIZE FAÇADE ENVELOPE CONTRACTOR
- ALL CURRENT SENIOR MANAGEMENT HAS OVER 20 YEARS OF CONSTRUCTION EXPERIENCE AND JOINTED BUSINESS FROM OTHER FAÇADE ORIENTATED COMPANIES
- ORIGINAL BUSINESS PLAN WAS TO BUILD COMPANY WITH NEW BUSINESS MODEL IN SPECIALIST CONTRACTING WITH EMPHASIS IN NEW TECHNIQUES IN CURTAIN WALLING AND CLADDING
- AT THE BEGINNING OF 2017 GLADIOUS SECURED 1ST MAJOR CONTRACT FOR BESPOKE METAL CLADDING ON PICCADILLY LIGHTS (CURVED SCREEN) IN LONDON
- IN JUNE 2018 COMPANY OPENED LONDON HUB OFFICE IN COLINDALE AND DESIGN OFFICE IN STOCKTON –ON-TEES (CO. DURHAM).
- IN NOVEMBER 2018 COMPANY OPENED METALWORK FACTORY IN BISHOP'S STORTFORD NEAR STANSTEAD AIRPORT. IT CATERS FOR OUR OWN PROJECTS AS WELL AS NUMBER OF EXTERNAL CLIENTS.
- IN DECEMBER 2018 GLADIOUS SECURED LARGEST TO DATE BUILDING ENVELOPE CONTRACT AT ABBEY WHARF , LONDON WHICH WAS SUCCESSFULLY COMPLETED IN FEBRUARY 2020.
- IN OCTOBER 2019 COMPANY OPENED SURFACE FINISHING AND POWDER COATING FACILITY IN THE SAME LOCATION AS FACTORY TO KEEP ALL MANUFACTURING PROCESSED IN ONE LOCATION AND UNDER CENTRALISED MANAGEMENT.

OUR WAY TILL NOW...

- DURING 2020, DESPITE ADVERSE EFFECTS TO WHOLE INDUSTRY CAUSED BY COVID-19, WE :
 - TESTED AND CERTIFIED OUR METAL CLADDING SYSTEM GL1
 - RETAINED ALL STAFF WHO WORKED FOR COMPANY AT THE BEGINNING 2020
 - EXPANDED OUR CUSTOMER PORTFOLIO WITH LARGE TIER 1 DEVELOPERS : BARRATT AND BOUYGUES(UK)
 - SECURED OUR 1ST PROJECT AS MAIN CONTRACTOR FOR PUBLIC REMIT WORKS
 - COMMISSIONED SURFACE TREATMENT PLANT IN OUR POWDER COATING FACTORY

COMPANY AT GLANCE... (AT JANUARY 2021)

22 office and
factory staff

25-30
operatives
on sites

£2.3M largest
project value
to date

7 ongoing
projects

32 Completed
Major Projects



KEY PRODUCTS AND SERVICES

Windows
and Doors

Curtain
Walling

Design, Supply, Install, Maintain

SFS and
metalwork

Cladding

Residential (aluminium or timber composite)

- Windows - Side & top hung, tilt & turn, pivoted, fully reversible.
- Doors – Single and Double patio swing doors , 2,3,4 panel sliding doors.
- Glazed with clear glass, spandrel panels, or perforated screens. Build-in Juliet balconies in glass or metal available.
- Full range of pressed metal cills, reveal pressings and soffit closures available.
- Various ventilation options including overhead louvres, soffit plenums, trickle ventilators.

Special Type (aluminium)

- Automated Opening Vents for smoke and ventilation including certified power actuators
- Fire Rated windows, doors and screens

Commercial (aluminium)

- Doors – heavy duty pivot hinged doors with anti finger trap. Barrel hinged doors.
- Mechanical , electro-magnetic or electric strike locks
- Mechanical or electrical door operators available.

| | |
|--------------------------|------------------------|
| Windows and Doors | <u>Curtain Walling</u> |
| <u>SFS and metalwork</u> | <u>Cladding</u> |

Preferred Systems

sapa:
TECHNAL®

WICONA®

ALUK®



Metal Technology

R **REYNAERS**
aluminium

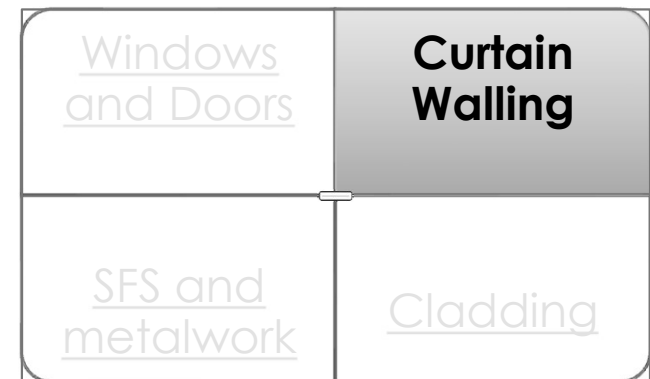
SCHÜCO

Stick Built Façade Systems(aluminium or steel)

- Pressure plates and toggle (structurally glazed) glass retention types.
- Various drainage and pressure equalisation options.
- Up to 6m single span height. Various types of support brackets designed to suit.
- Completed with matching glazed in windows, panels, vents and doors.
- Glazed with clear glass, spandrel panels, or perforated screens. Build-in Juliet balconies in glass or metal available.
- Full range of pressed metal cills, reveal pressings and soffit closures available.
- Various ventilation options including overhead louvres, soffit plenums, trickle ventilators.

Unitized Façade Systems(aluminium)

- Toggle (structurally glazed) glass retention as standard.
- Available with various sealing membranes and gaskets to suit surrounding building fabrics. Complete with face fixed or cast in adjustable brackets.
- Available with matching glazed in windows, panels, vents and doors.
- Glazed with clear glass, spandrel panels, or perforated screens. Build-in Juliet balconies in glass or metal available.
- Full range of pressed metal cills, reveal pressings and soffit closures available.
- Various ventilation options including overhead louvres, soffit plenums, trickle ventilators



Preferred Systems

sapa:

TECHNAL[®]

WICONA[®]

ALUK[®]



Metal Technology

R **REYNAERS**
aluminium

SCHÜCO

Stick Built and Modular, Load and Non-load Bearing Structural Framing Systems

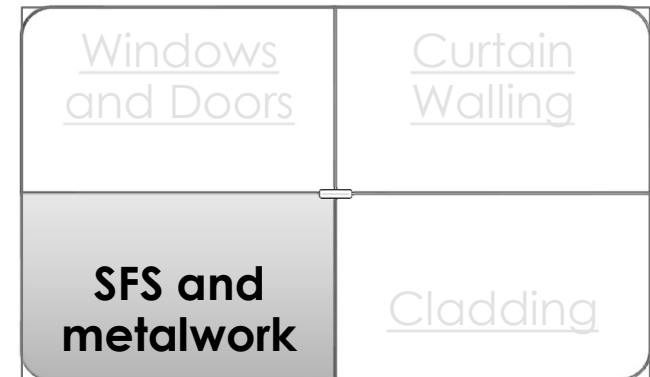
- Available as site assembled frames or pre-manufactured in larger sizes, pre-boarded and fully finished modules.
- Various stud and truck sizes (up to 250mm) and steel gauges (up to 2mm)
- Multiple compound studs and lintels to suite various openings and loads
- Head deflection allowance for up to 20mm.
- Load bearing walls and floors for up to 5kN/m² live loads , usually suitable for construction up to 4 storey buildings without need of large concrete or primary steel structure.
- Finished with non-combustible, water proof external boarding.

Balustrades

- Frameless glass balustrades with: proprietary aluminium clamping channel / steel back-to-back clamping, angles / point glass fixings through slab or wall
- Post and Clamp glass or metal balustrades
- Fully Framed glass balustrades

Metalwork

- Various brackets, pressings, trims, cover panels and screens , made from galvanized steel, stainless steel or aluminium.
- Metal cavity trays
- Louvres and plenums
- Technical steel doors



All SFS and Metalwork
Designed and Manufactured
By



Gladious

Aluminium Wall Cladding Systems GL1 /2 by Gladious

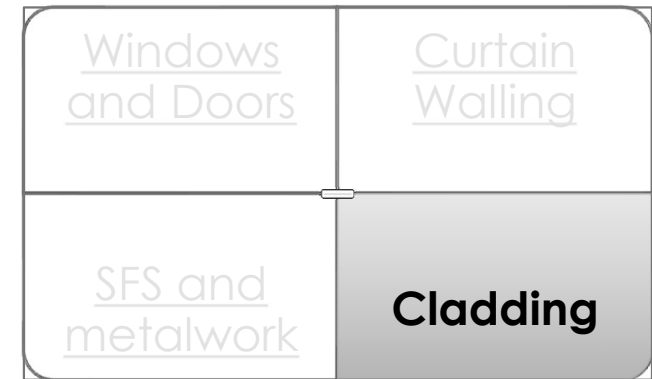
- Designed to compliment masonry facades with full height cladding panels installed around windows / doors and **designed for fixing over SFS or solid base walls in case of GL1 or at floor slab positions in case of GL2**
- Both system are based on use of 2 or 3mm aluminium folded panels with maximum panel sizes 1255mm (width) x 2860mm (height)
- Panels supported by Fisher EVT or ATKII cladding sub-frame systems with maximum cavity 300mm allowing for up to 250mm insulation
- Through out aluminium / stainless steel construction makes system non-combustible by nature of the materials
- Finished in Akzo Nobel or Axalta polyester powder coating system with A1 fire rating with full range of RAL , bronze and metallic colours as well as gloss, matt and stone / sand effect finishes
- System was accepted by to use in UK by LABC and ICW and currently undergoing testing to CWCT standards by Wintech-UL with further certification to Winmark .

Aluminium Wall Coping System GLC by Gladious

- Coping system is based in use 2 or 3mm powdercoated aluminium panels fixed over dual part aluminium brackets adjustable in 2 way to achieve perfect alignment and overcome build tolerances.
- Cope panels sealed between themselves with insert profiles holding rubber gaskets preventing water ingress inside of copes

Other Cladding Types

- Profiled steel cladding.
- Ceramic and terracotta cladding.
- GRC (glass reinforced concrete)slabs
- Fibre Cement cladding

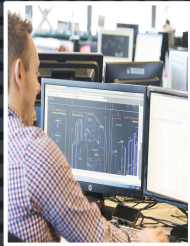


All Metal Cladding Designed and Manufactured By



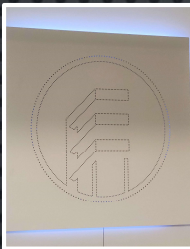
Gladious

OUR RESOURCES



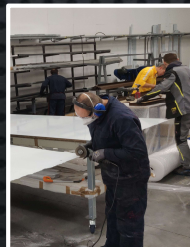
Design Office

Team of 2 full time designers, 1 fabrication draughtsman and 1 coordinator catering for all technological design needs of our projects.



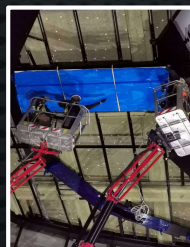
London Office

Our London hub is main collaboration place for our clients, architects and suppliers as well as workplace for company buyer, estimator, quantity surveyor and project administrator.



Metal Fabrication and Painting Factories

Two purpose built units with total area over 11,000 sq.ft. house another office, array of metalworking machinery, welding area, metal finishing stations, pre-treatment plant, powder coating line and curing oven.



Project Sites

All our sites are managed by our qualified and experienced site managers under direction of project manager and typically involve between 25-40 strong workforce of fixers, logistics operatives, banksman and supervisors .

RECENT PROJECTS

(FOR MORE INFORMATION VISIT WWW.GLADIOUS.CO.UK)



Marco Polo

Silvertown, London
(Residential, completed)



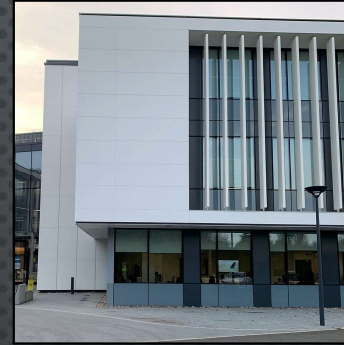
Abbey Wharf

Wembley, London
(Residential, completed)



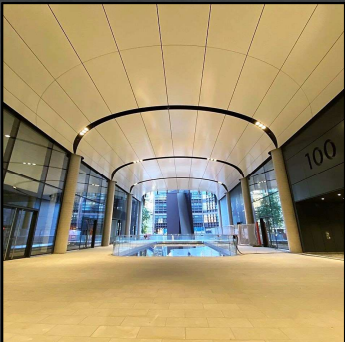
Lock No19 / Bream St

Old Ford Dock, London
(Residential, ongoing)



Atkins Global

Epsom, Surrey
(Workspace, completed)



100 Liverpool St.

Broadgate, London
(Infrastructure, completed)



Carolyne House

Croydon, London
(Residential, completed)



WE LOOK FORWARD TO
WORKING WITH YOU