

# COMPANY PROFILE

## BUILDING FAÇADE ENVELOPES



Gladius

### OUR CLIENTS

MAIN CONTACTORS

DEVELOPERS

STAKEHOLDERS

### PROJECT RANGE

£200K

TO

£3M



## WHO WE ARE

Gladius Ltd is a UK-based specialist façade contractor with a head office in London and three manufacturing sites in Hertfordshire. We offer a variety of fully tested external building envelope solutions and cover all stages from pre-construction costing to design, manufacture and on-site installation.

Our staff have decades of experience and knowledge in managing and constructing large and complex façade projects for commercial and residential buildings in London and across the UK. Our diverse product range and expertise in the façade industry enable us to deliver high-complexity projects that require a single point contractor for most of the façade works.

## WHY CHOOSE US

At Gladius, we are passionate about creating functional and cost-effective façades that meet the needs and expectations of our clients. We work with a wide range of clients, from top UK developers to Tier 1 contractors, offering complete façade solutions for their projects. From tender stage to the final on-site installation and commissioning, we provide quality, cost-effective and bespoke turn-key façade packages that enhance the aesthetics and performance of any building.

Our product range covers almost all types of non-masonry external wall systems, glazing and metalwork. We have a dedicated team of experts in design, estimating, commercial, procurement and project management, who work closely with our factories and experienced on-site installation teams to deliver fully coordinated façade packages at a very competitive cost.

## OUR SERVICES

### GLAZING & ACCESS



- Aluminium Windows & Doors
- Security Rated Communal and Technical Doors
- Fire Rated Communal and Technical Doors
- Aluminium Curtain Walling

### CLADDING & SCREENING



- Metal Cladding using our own A2 rated and CWCT tested system
- Metal Copings
- Stone and GRC Cladding
- Metal Screens, Louvres and Grilles
- Brick slips

### METAL WORK & PPC



- Pressed Metalwork (brackets, pressings, copings, window pods, trims, cills, etc.)
- Architectural Metalwork (balustrades, Juliet balconies, etc.)
- Canopies

### STRUCTURAL



- Structural Framing Systems (SFS)
  - Non-load bearing "stick built" infill frame
  - Load and non-load bearing panelised frame
  - Load bearing modular frame

## CONTACT US

020 3967 6838

ESTIMATOR@GLADIOUS.CO.UK

WWW.GLADIOUS.CO.UK

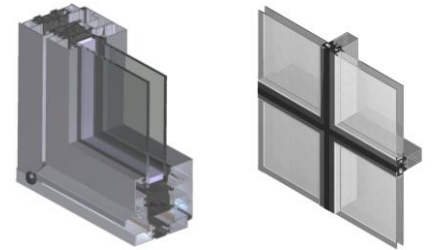


# BUILDING FAÇADE ENVELOPES

# SERVICES

## WINDOWS, DOORS & CURTAIN WALLS

- High-performance aluminium residential windows & doors, communal doors and screens, and curtain walling. Manufactured in market-leading systems such as **TECHNAL**, **SAPA**, **REYNAERS**, **ALUPRO** and **ALUK**.
- Heavy traffic and extra secure communal and technical doors including **PAS24**, **LPS1175**, **LPS2081** and **STS202** compliant systems.
- **Fire Rated** windows, doors and glazing.
- With sustainability in mind, we can offer highly efficient and environmentally friendly **SOLEAL Next** windows & doors. **SOLEAL Next** is made in Hydro CIRCAL® aluminium produced with a minimum of **75% recycled end-of-life aluminium**, and **95% recyclable**.



## CLADDING

- For Metal Cladding we offer several system types with panels manufactured from **aluminium**, **steel** or **stainless steel**.
- **Gladius Cladding System GL1** is **A2 Fire Rated** and tested to **CWCT "Standard for Systemised Building Envelopes 2005" Sequence B** (updated in 2020) and offers **Water and Air tightness** up to 600Pa, **Wind Loads** up to 3600Pa, and **Impact Resistance** Cat. B class 2.
- Our cladding systems include any necessary wall cavity elements such as support frames, insulation, fire cavity barriers, cavity closures, interface details, membranes, etc.

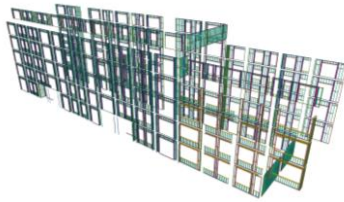
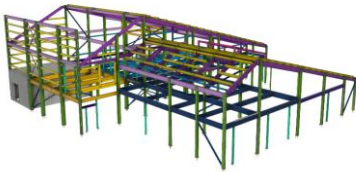


# BUILDING FAÇADE ENVELOPES

# SERVICES

## STRUCTURAL FRAME SYSTEMS (SFS)

- Proven, cost-effective, and programme efficient steel-stud panel framing systems which are either fixed as **infills** between the primary structural frame (concrete or steel) or constructed as **self-supporting load-bearing panelised** assemblies, creating the structural frame of the building itself.
- At Gladious we partner with a few market leading SFS systems such as **FrameClad**, **Intrastack**, **EOS** and **Metsec**, which we usually combine with our cladding, glazing and metalwork products offering our customers a complete **turn-key solution**.



## ARCHITECTURAL METALWORK

We manufacture and polyester powder coat a wide range of pressed and architectural metalwork such as:

- Metal cladding panels and pressings, perforated panels
- Window cills, pods and spandrel panels, brackets
- Louvre screens, steel doors and screens
- Railings, balustrades, canopies, etc.

Combined with an in-house design team, experienced and skilled installers and professional management, metalwork is one of our key offerings to customers as a turn-key solution.



# RECENT PROJECTS

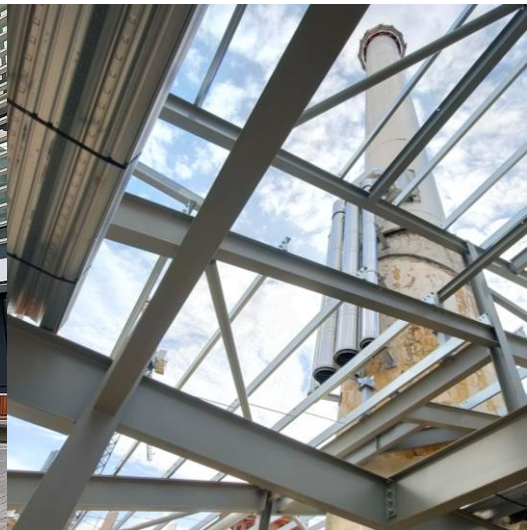
Gladious



**RESIDENTIAL**



**COMMERCIAL**



**INFRASTRUCTURE**

ONGOING FROM  
AUGUST 2023

VALUE  
£3.2 M

## RIDGEWAY VIEW, PHASE 5

Mill Hill, London

**Developer: Barratts East London**

**Architects: RM\_A**

**Client: Barratt / Birchgrove**

### SCOPE OF WORK:

- Aluminium residential windows and doors
- Aluminium Communal Doors (PAS24 and LPS1175)
- Curtain Walling
- Gladious GL1 metal cassette cladding
- Corrugated steel cladding
- Steel juliet balconies
- Fire Rated external Doors
- Pressed metalwork package

The Mill Hill Ridgeway Views development regeneration programme is a strategic initiative to enhance the quality of life and economic opportunities for the residents and businesses of this historic area. The programme aims to preserve and improve the natural and built environment, create new public spaces and amenities, and support the growth and diversification of the local economy. The development is set within 47 acres of landscaped green space and offers stunning views across the Totteridge Valley.

We were contracted to deliver all glazing, cladding and majority of architectural metalwork elements across 5 blocks of Phase 5.

Block A is a particularly prominent building replicating previous block that stood on its place from 1930's and served many historic purposes including film sets and pharmaceutical research laboratory.

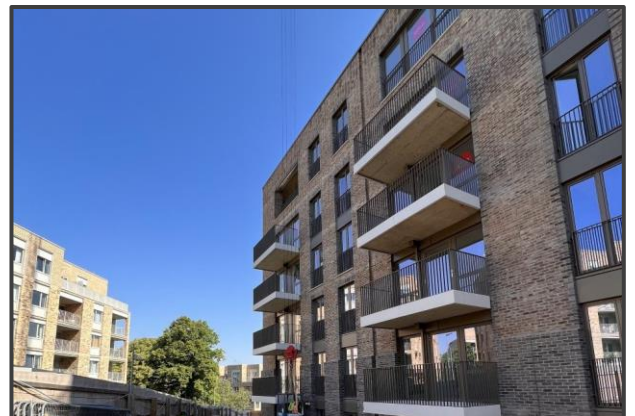


**BUILDING ENVELOPE SYSTEMS**

020 3967 6838

headoffice@gladious.co.uk

www.gladious.co.uk



ONGOING FROM  
FEBRUARY 2023

VALUE  
£1.32 M



## CART & HORSES PUBLIC HOUSE

Newham, London

**Main Contractor: iBuild**

**Architect: PH+**

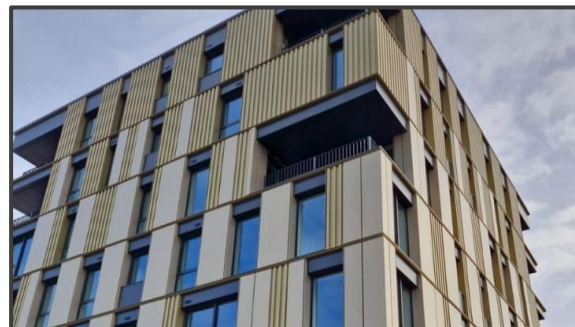
**Client: Investland**

### SCOPE OF WORK:

- Gladius GL1 metal cassette cladding to envelope in anodic colors
- Bespoke pressed corrugated steel cladding to envelope in anodic colors
- Aluminium residential windows and doors with highly acoustic specification
- Roof, Terrace and Balcony copings
- Balcony and Terrace metal soffits
- Pressed metalwork package

The Cart and Horses pub has a significant social value as the birthplace of Iron Maiden, one of the most influential and successful heavy metal bands in history. The pub has been a live music venue for decades, hosting various rock bands and attracting fans from all over the world. The pub is also a part of the local heritage, being a locally listed building that dates back to the 18th century.

The site offered unique opportunity to construct 29 new-build apartments on the back of the pub, which include a shared rooftop communal garden. The development designed to restore and include original building of the pub thoughtfully incorporating it in new modern real estate. New building includes for multi tone anodic metal cladding and sliding wintergarden doors providing flexible private spaces. The development improves the current public house facilities and offers unique mixture of modern construction materials with historic and cultural spirit of Cart & Horses public house.



**BUILDING ENVELOPE SYSTEMS**

020 3967 6838

headoffice@gladius.co.uk

www.gladius.co.uk

**COMPLETED**  
**AUGUST 2023**

**VALUE**  
**£1.3 M**

# HARROW VIEW ENERGY CENTRE

(FORMER KODAK SITE), KNOWN AS EASTMAN VILLAGE

Harrow, London

**Developer:** Barratt West London

**Architects:** East Architecture

**Client:** BDW

## SCOPE OF WORK:

- Load bearing and infill SFS framing
- GRC cladding to external envelope
- Composite insulated metal roofing
- Rainwater goods
- Aluminium curtain walling, windows and doors
- Bespoke technical access doors
- Metal Louvres
- Metal Balustrades and Handrails
- Gladious GL1 metal cladding

Eastman Village is a new community in the heart of Harrow, building on the 125 year legacy of the iconic former Kodak factory established on this place from 1891 . As part of the regeneration programme by Harrow Council, Eastman Village featuring a mix of 2000 apartments and houses, as well as landscaped gardens, shops, cafes, a school and a health centre.

Energy Centre is the only building on new development carrying full legacy of former Kodak factory. It is designed to match size and shape of original energy producing plant that supplied power and heat to entire factory. New Energy Centre building has similar purpose. Half of the building houses modern , very efficient energy generating plant providing heat and hot water for entire Eastman Village. The other half offers unique community space set with industrial style interior accommodating café, management office, marketing suite and gym.



Gladious

**BUILDING ENVELOPE SYSTEMS**

020 3967 6838

headoffice@gladious.co.uk

www.gladious.co.uk

**COMPLETED**  
**MARCH 2022**

**VALUE**  
**£2.1 M**

# HAYES VILLAGE (FORMER NESTLE FACTORY) BLOCK F1

Hayes, Greater London

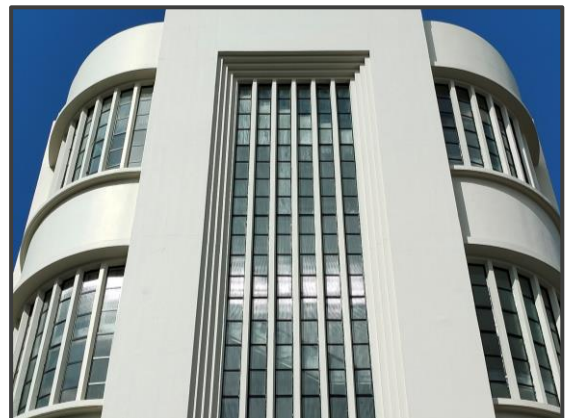
**Developer:** Barratt West London  
**Architects:** de Metz Forbes Knight

## SCOPE OF WORK:

- Panelized SFS Wall System to retained façade
- Cavity insulation, water and fire proofing
- Infill SFS Wall system
- Reynaers SL38 Heritage Windows
- SAPA Elegance 52 curtain wall
- Technal STII communal doors
- Jansen Janisol heritage communal door
- Custom-made aluminium framed strip glazing
- Various pressed metalwork features

Designed by award-winning deMetzForbesKnight architects, this building stands as a jewel in the crown of the entire development. Featuring a grade A2 listed façade, carefully retained and incorporated in a new building behind, whilst keeping its original ArtDeco appearance. 96 high-specification apartments thoughtfully designed throughout the building, offering a high-quality lifestyle with a touch of early 20th-century history.

Gladius Ltd was selected for this contract for offering an innovative inverted façade design, allowing the installation of windows, cavity works and SFS working only from the inside of the building, while the renovation of the retained concrete façade was taking place outside.



**BUILDING ENVELOPE SYSTEMS**

020 3967 6838

headoffice@gladius.co.uk

www.gladius.co.uk



**COMPLETED**  
**JANUARY 2023**

**VALUE**  
**£1.3 M**

# CHESHUNT LAKESIDE

Cheshunt, Hertfordshire

**Main Contractor: Inland Homes**

**Architects: KSS**

**Client: B3 Living**

## SCOPE OF WORK:

- Aluminium residential windows SAPA 75Si
- Aluminium residential doors SAPA DF75
- Aluminium communal entrances SAPA STII
- Steel communal doors to LPS1175 security rating
- Architectural metalwork to car park areas
- Aluminium balcony soffits and fascias

Cheshunt Lakeside is set to become a vibrant new mixed-use community for Cheshunt, comprising over 1,725 new homes and 1000m2 of commercial space.

The master plan for the development also includes further communal gardens and a traffic-free 'Green Link' for pedestrians designed to reflect the neighbouring River Lea corridor and support local wildlife. Plans for the wider Cheshunt Lakeside development will restore eight football pitches of green space and will also include commercial spaces, community facilities, and a new primary school. B3Living's homes will sit opposite the primary school.

Gladius Ltd is proud to be chosen as the preferred contractor for the delivery of the complete glazing package. The 1st phase of the scheme covers 6 blocks with 192 new apartments, including 46 designed for affordable renting and two commercial units.



Gladius

**BUILDING ENVELOPE SYSTEMS**

020 3967 6838

headoffice@gladius.co.uk

www.gladius.co.uk

**COMPLETED**  
**NOVEMBER 2022**

**VALUE**  
**£620K**

## RIVERSIDE HOUSE

Guilford, Surrey

**Main Contractor: Stelling Properties**

**Architects: Flanagan Lawrence**

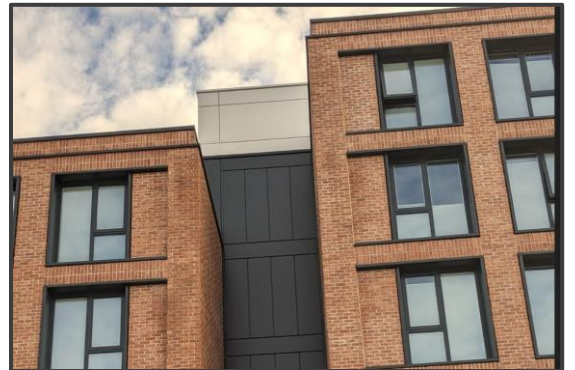
**Client: Unilife**

### SCOPE OF WORK:

- Aluminium cladding system Gladius GL1
- Aluminium coping system Gladius GLC1
- Aluminium curtain walling to communal areas using SAPA Elegance 52 and Technal MX 62
- Fire rated curtain walling to gym area using Aluprof MB-SR50N - EI60
- Main entrance screen with automated doors
- Internal glass partitions
- Architectural metal louvres
- Architectural metal window pods

Our 1st student accommodation project working with a developer using a modular building method. The project is by Stelling Properties for Unilife and consists of 82 luxury self-contained student studio apartments and communal areas, comprising a study and social hub, gym, and café for students at the nearby Surrey University.

Designed by award-winning architect Flanagan Lawrence, the building is set in the heart of Guildford overlooking the river, designed to provide first-class facilities for its residents to work, relax and play.



**BUILDING ENVELOPE SYSTEMS**

020 3967 6838

headoffice@gladius.co.uk

www.gladius.co.uk

**COMPLETED**  
**AUGUST 2022**

**VALUE**  
**£750K**

## LUTON STREET (CARRICK YARD)

Westminster, London

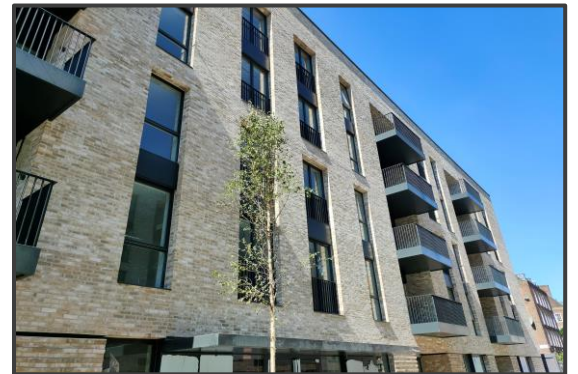
**Main Contractor: Bouygues (UK)**  
**Architects: Flanagan Lawrence**  
**Client: Link City and Westminster Council**

### SCOPE OF WORK:

- Aluminium cladding system Gladius GL1
- Aluminium coping system Gladius GLC1
- Architectural Metalwork
  - Juliette Balconies
  - Entrance Canopies
- Pressed metal work features

Located within Westminster's Church Street area, the Luton Street project provides 168 new homes constructed by the UK arm of French developer Bouygues in the heart of Lisson Grove, NW8 – a place brimming with bustling local markets and proud independent boutiques. Welcoming new voices to an eclectic neighbourhood, discover a community that speaks for itself.

This design-led development comprises both the public and private realms to tie the new development into the local area, working within the existing 'Green Spine' initiative for a new public landscaped route through the development.



**BUILDING ENVELOPE SYSTEMS**

020 3967 6838

headoffice@gladius.co.uk

www.gladius.co.uk

**COMPLETED**

**MAY 2022**

**VALUE**

**£1.15 M**

# MERRIELANDS CRESCENT

Dagenham, Greater London

**Main Contractor: Inland Homes**

**Architects: KSS**

**Client: Clarion Housing Group**

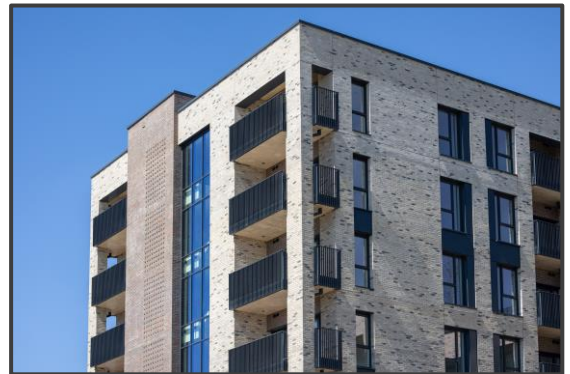
## SCOPE OF WORK:

- Aluminium cladding system GL1
- Aluminium coping system GLC1
- Aluminium balcony fascias and capping beam cladding
- SAPA Elegance 52 aluminium curtain walling
- Technal STII communal and technical doors
- Various pressed metalwork features

Merrields Crescent is a multi-award-winning development built as a joint venture development between Clarion Housing and Inland Homes on a disused 'Ford' Brownfield site.

It comprises 327 residential units and retail space with associated off-street parking and soft landscaping with a prime location on the fringes of the city.

Gladius Ltd was appointed to deliver metal cladding, copings, pressed metalwork and curtain walling elements of the facade on all 6 blocks of the scheme.



**BUILDING ENVELOPE SYSTEMS**

020 3967 6838

headoffice@gladius.co.uk

www.gladius.co.uk

**COMPLETED**  
**SEPTEMBER 2020**

**VALUE**  
**£1.1 M**

## **BREAM STREET (KNOWN AS LOCK NO 19)**

Old Ford Docks, London

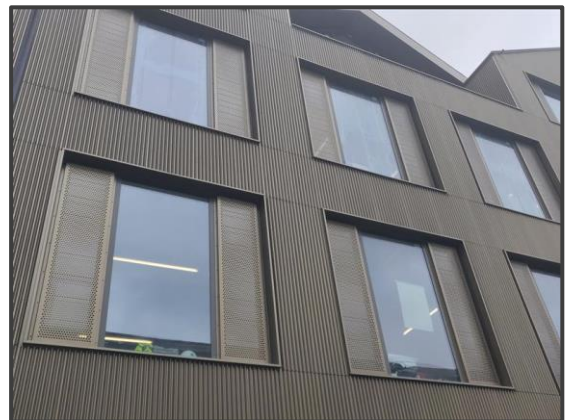
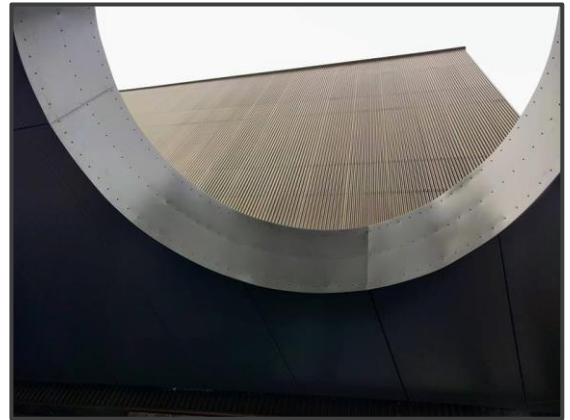
**Developer: London Quadrant (L&Q)**

**Architects: Allford Hall Monaghan Morris**

### **SCOPE OF WORK:**

- Cladding and Feature Metalwork package to four blocks utilizing three key cladding systems
- Bespoke pressed steel profile cladding finished in eye-catching Interpon Anodic Bronze color
- Gladius Aluminium cladding and coping systems GL1 + GLC1
- Agrob Buchtal KeraTwin K20 Terracotta cladding system
- Undercroft canopy cladding and all main entrances soffit cladding
- Metal and brick slip cladding in internal lobbies

Gladius is extremely pleased to play a key role in delivering this mixed-use development with 30% affordable housing and a green space for London Quadrant. The development is located behind Bream Street Wharf in Fish Village and is the newest creative quarter in Hackney Wick, comprising of 202 flats and a working space block built on the former industrial space facing the Olympic Park.



**BUILDING ENVELOPE SYSTEMS**

020 3967 6838

headoffice@gladius.co.uk

www.gladius.co.uk